

Census Bureau Modernization The Role for ACS

Presenter: John Thompson,
Team:

Stephanie Shipp, Sallie Keller, Ken Prewitt, Matthew Snipp, Joe Salvo
Chris Barrett, Sarah Nusser, Erika Becker-Medina,
Ed Wu, and Zhengyuan Zhu

July 24, 2023

Census Project Virtual Briefing on the ACS

Forces Driving Innovation Today

“
As we advance into the 21st century, we are experiencing **increased demand for our data**, struggling with **challenges to traditional data collection** methods, and exploring **rich new data sources and tools** that can revolutionize what we do and how we do it. Our success critically depends on our ability to seize the opportunities in front of us to deliver **statistical products that address the increasingly complex and diverse needs of our users.**”

Ron S Jarmin, PhD., Deputy Director
U.S. Census Bureau



Flipping the Focus

Determine what information stakeholders need to reach their objectives

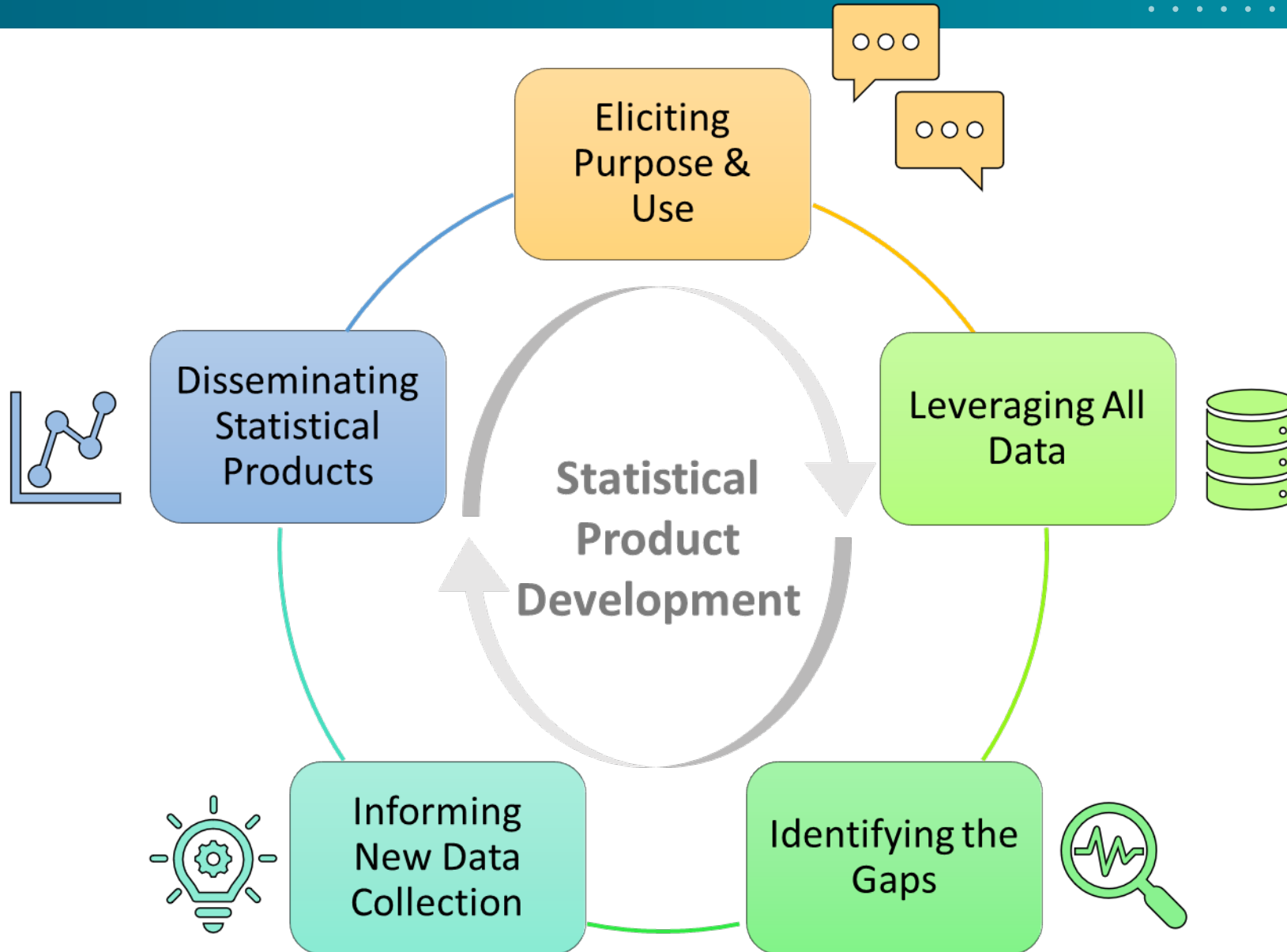
From there, shape the statistical products to be developed



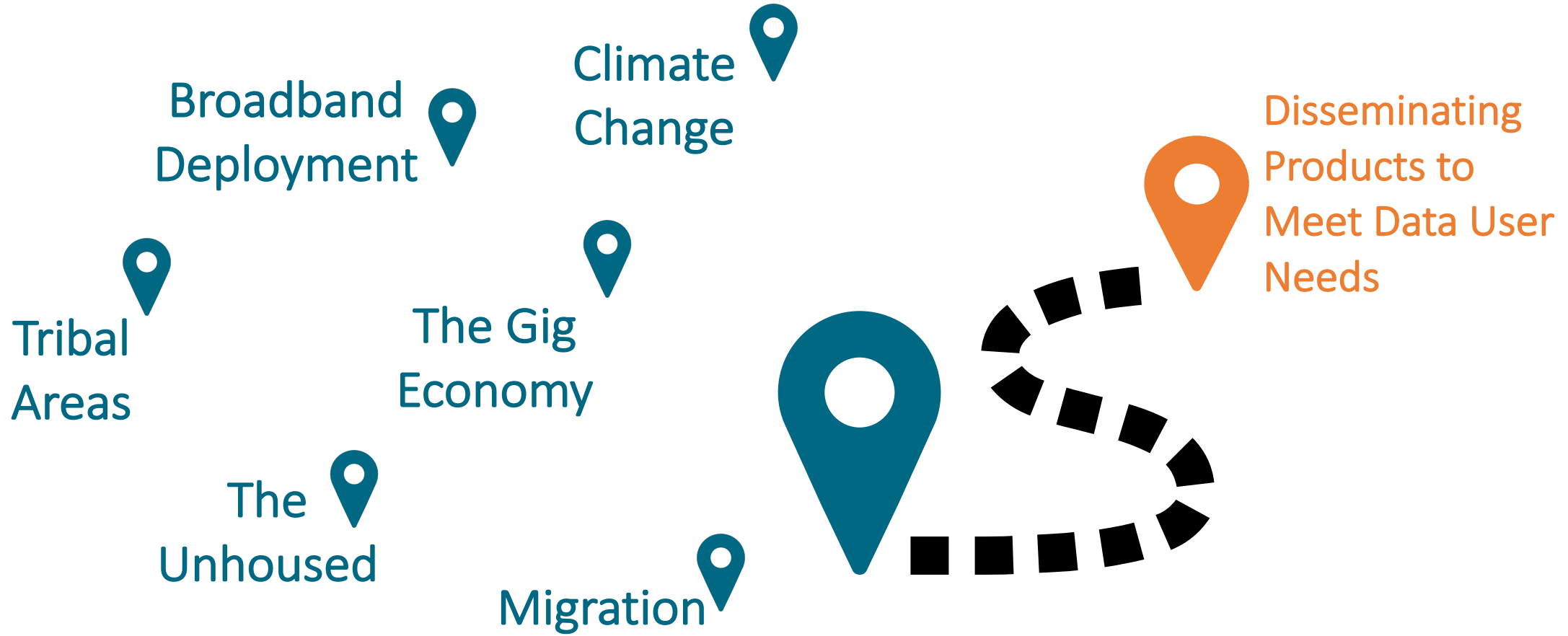
Statistical
Product First
Approach



The Continuous Journey Ahead



What are some purposes and uses?



What are some purposes and uses?



Use *ALL* Data Assets

Going beyond the survey data we collect

Designed Data



Administrative Data



Opportunity Data



Procedural Data





Data Ingest and Collection for the Enterprise (*all* data assets)



Enterprise Data Lake

Data processing, computing, and management



Enterprise Linked Frames

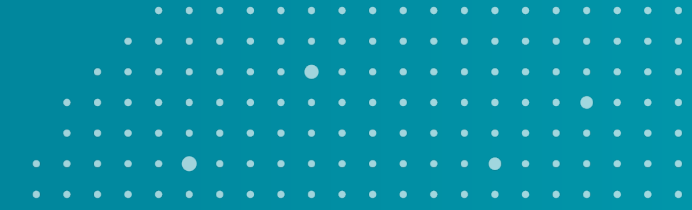
4 seamless and linkable frames



Enterprise Dissemination Services



Curated Data Enterprise



“Linking across time, and surveys, supplemented with third-party and administrative data can help improve the coverage and completeness of Census Bureau data, innovating beyond a survey-alone model that has reached its scientific and practical limits.” (Keller et al. 2022)

We describe this new, innovative state as a Curated Data Enterprise (CDE).

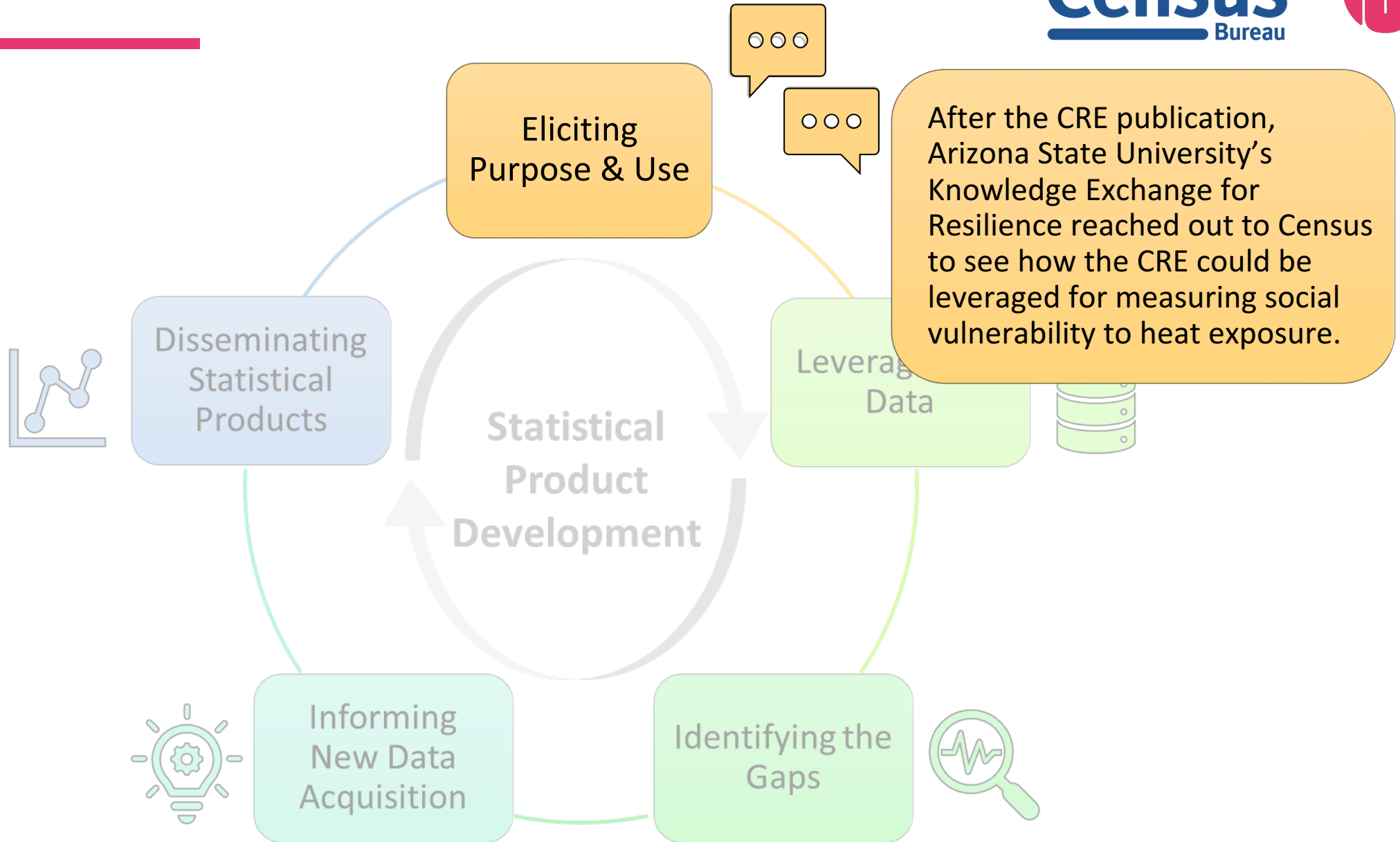
CURATED DATA ENTERPRISE

*The Census Bureau
of the Future*

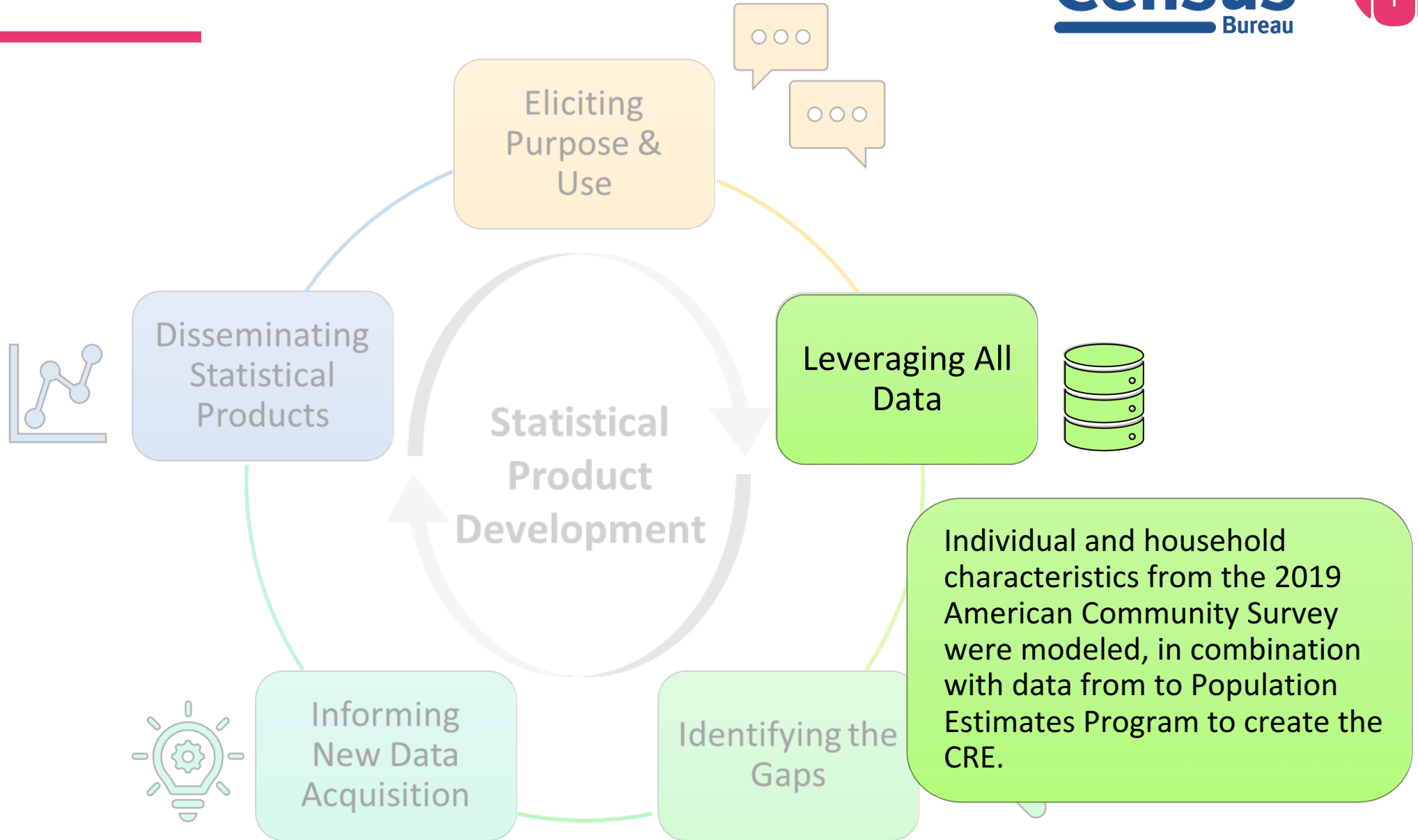
Both an infrastructure and a continuously evolving ambition to empower and enable Bureau scientists and their data users to develop new measures of people, places, and the economy.

Exploits multiple data sources, from sample surveys, censuses, and other official administrative and third-party data, which can provide more robust, timely, and comprehensive measures when combined.

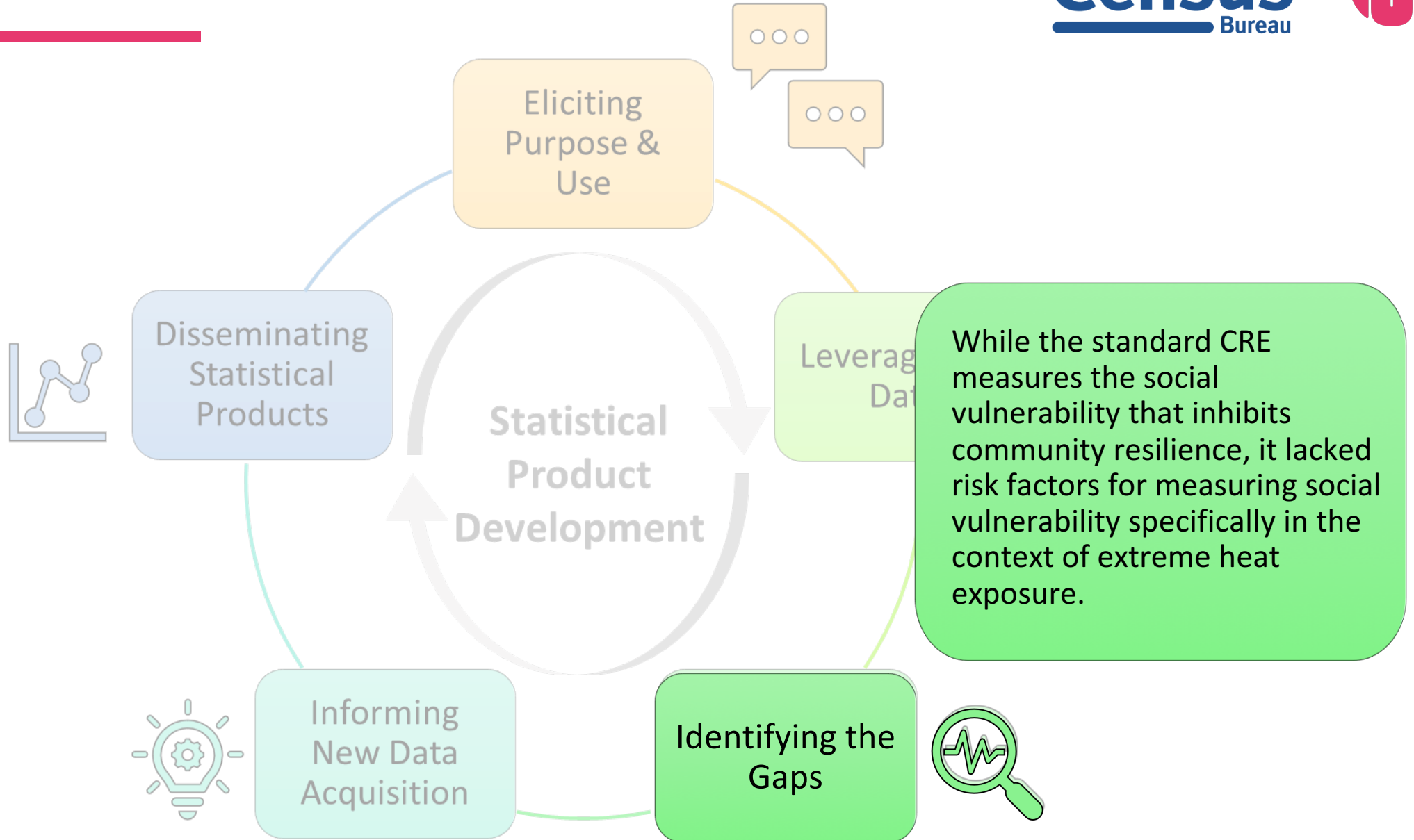
Exemplar: CRE for Heat



Exemplar: CRE for Heat



Exemplar: CRE for Heat



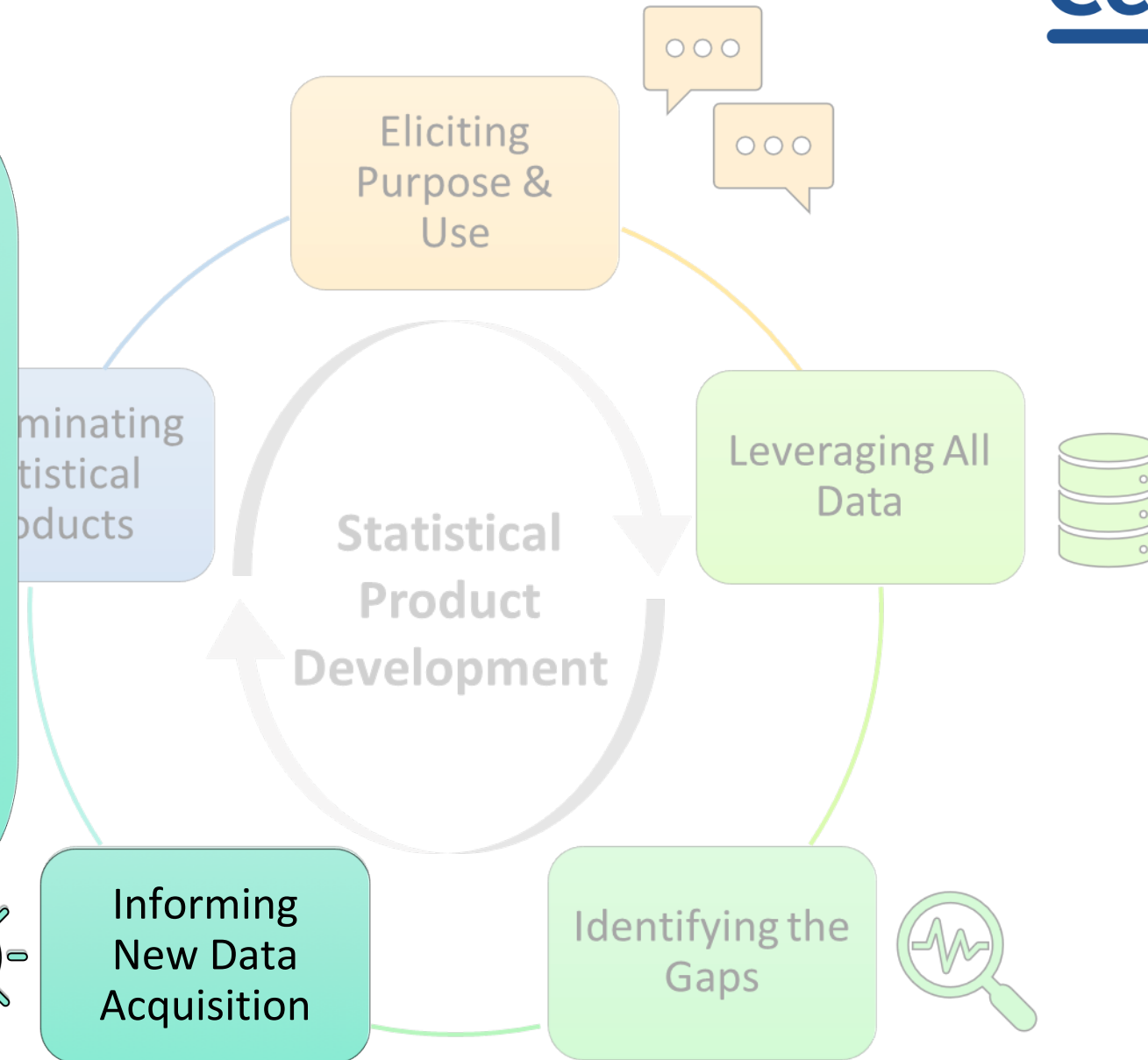
Exemplar: CRE for Heat



With consultation from Arizona State University's Knowledge Exchange for Resilience, the CRE was updated for vulnerability to heat exposure.

Three of the ten standard CRE risk indicators were modified, taking into account:

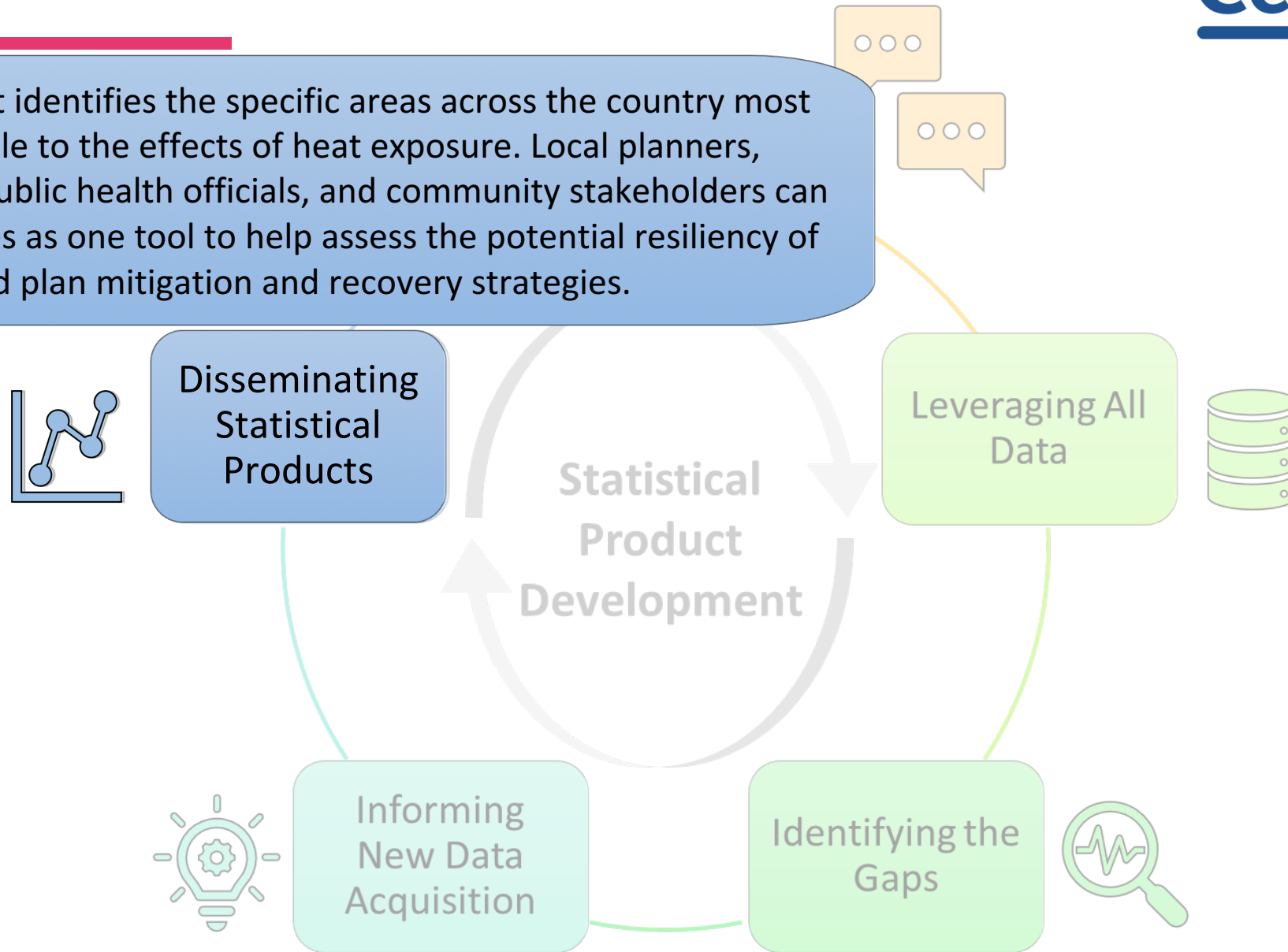
- housing structure type,
- commute type, and
- whether the household's housing costs were greater than 50%.



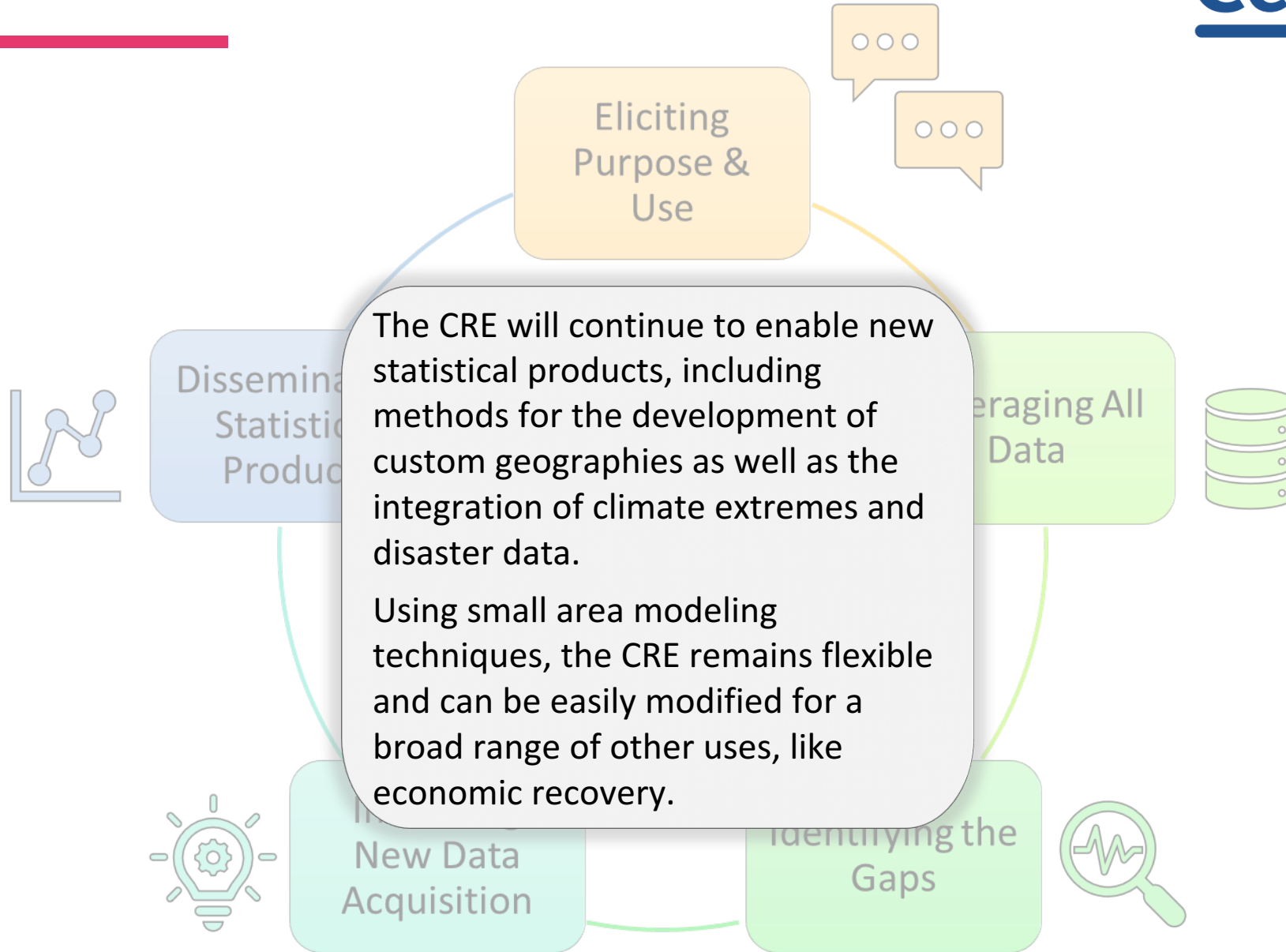
Exemplar: CRE for Heat



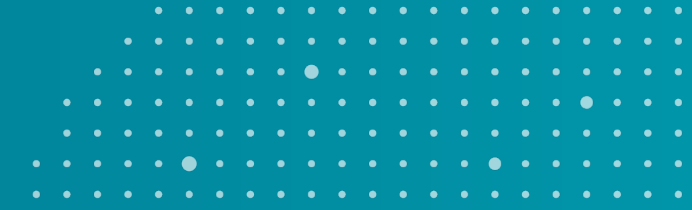
The CRE for Heat identifies the specific areas across the country most socially vulnerable to the effects of heat exposure. Local planners, policy makers, public health officials, and community stakeholders can use the estimates as one tool to help assess the potential resiliency of communities and plan mitigation and recovery strategies.



Exemplar: CRE for Heat



Coming Attractions



- ACS will be modernized resulting in more timely and granular data
- The ACS is foundational to producing statistical products to answer important questions. More work such as in the example will continue
- The ACS is critical to the development of the demographic frame
- The Census Bureau is considering more frequent ACS data releases
- ACS data modifications are being explored to support AI queries



Thank You!